



RIVER DISTRICT VANCOUVER

A master-planned
community by
wesgroup

3 UNITS
REMAINING

UP TO **3,538 SF**
CONTIGUOUS



Join: **save on foods**



bufala



LUCKY TACO



TD Canada Trust

Scotiabank

everything
WINE



boketto

PROJECT OVERVIEW

On the banks of the Fraser River, the River District is a rare and unique neighbourhood that consists of 124-acres located in the area formerly known as East Fraserlands in South Vancouver.

River District is Vancouver's last waterfront neighbourhood, the result of an in-depth engagement and planning process that brought together the local neighbourhood with experts in urban design, architecture, landscaping and environmental sustainability to plan a neighbourhood like no other. River District is a cohesive, vibrant neighbourhood with all the necessary amenities, from waterfront access, to a public plaza, shopping, restaurants, community centre, school, and modern residences.

UPON FULL BUILD-OUT, RIVER DISTRICT WILL HAVE 10,432 HOMES WITH A POPULATION OF APPROXIMATELY 18,000 RESIDENTS.



HIGHLIGHTS

- Over 1,900 homes completed
- Town Square completed
- 18,000 residents
- 10,432 households
- 7.2 million sq.ft.
- 2 schools
- Daycare centres
- Community centre
- 25 acres of green space
- 1.5 kilometres of riverfront access



LOCATION



23 minutes to Downtown Vancouver



7 minutes to Metrotown in Burnaby

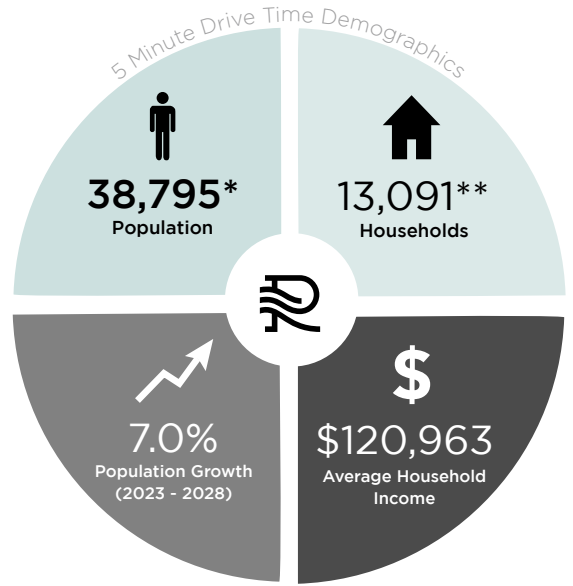


15 minutes to Vancouver Int'l Airport



Exposure to Marine Way with Traffic Counts of

62,288 Vehicles Per Day

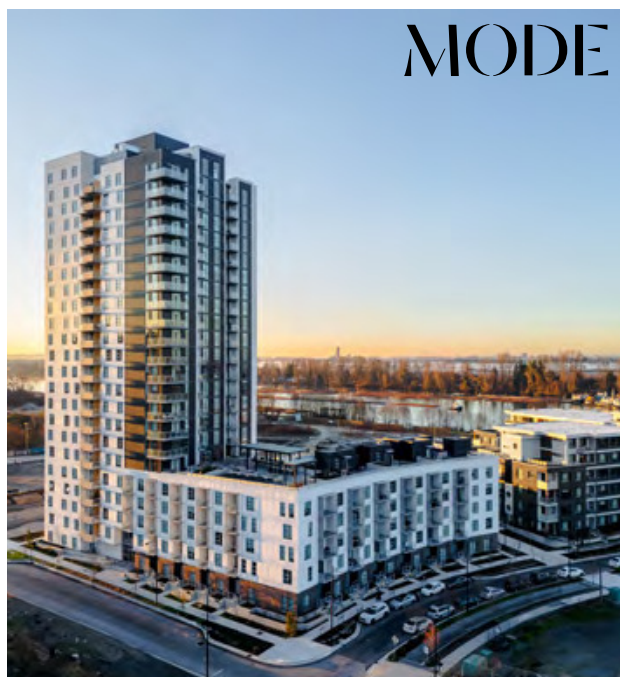
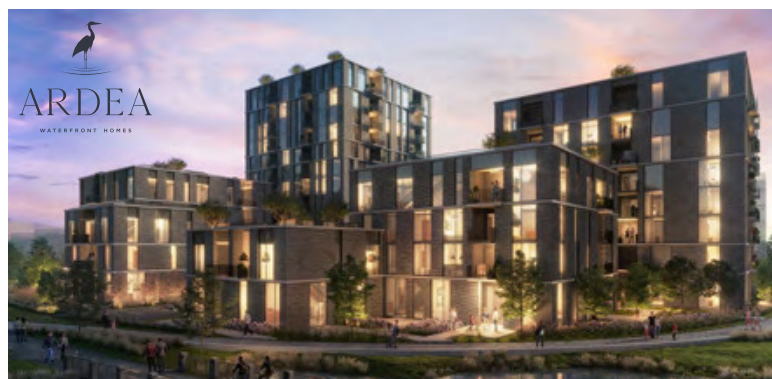


DISTANCE FROM REGIONAL COMPETITORS MAKES RIVER DISTRICT AN OPPORTUNE DESTINATION, WITH A PRIMARY TRADE AREA OF APPROXIMATELY 41,392 RESIDENTS, AND A DAYTIME POPULATION OF 29,985 PEOPLE.



* An est. additional 18,000 residents upon project completion.
** An est. additional 10,432 households upon project completion.

RESIDENTIAL BUILDOUT



TOWN CENTRE SALIENT FACTS

- Town Centre 1: Completed & Tenants Open
- Town Centre 2: Completed & Tenants Open
- Town Centre 3: Completed & Tenants Open
- Town Centre 4: Available, Completed & Tenants Open



TOWN CENTRE
SITE PLAN





DETAILS

RETAIL OPPORTUNITIES AVAILABLE

CRU 1: LEASED

CRU 2 (3421 Sawmill Crescent): 1,228 SF

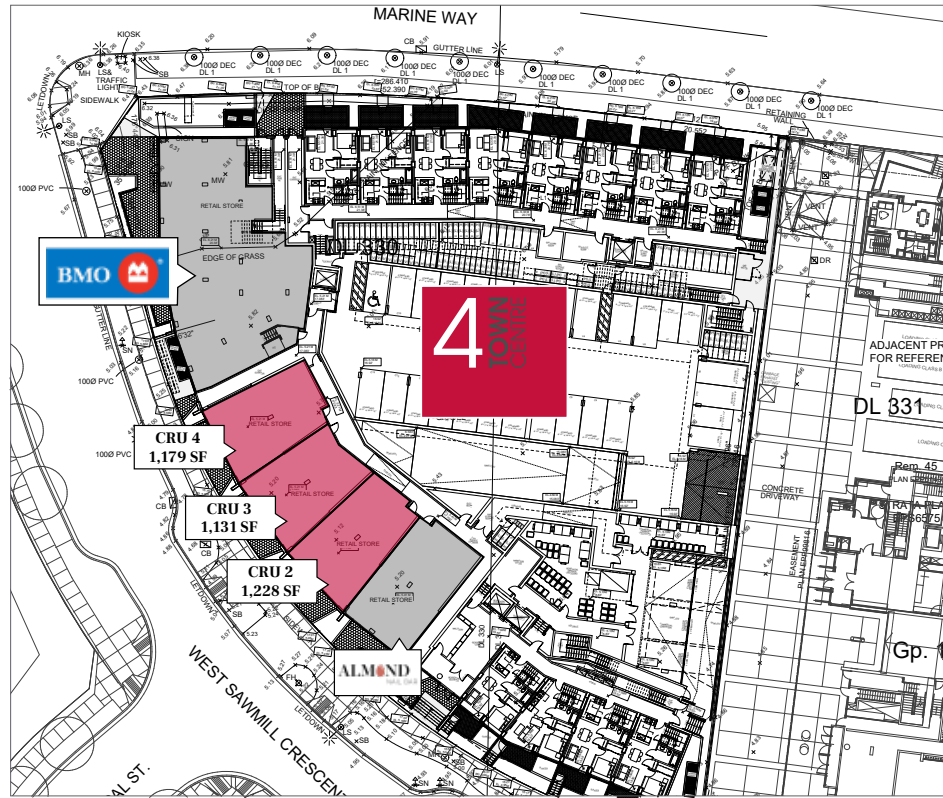
CRU 3 (3419 Sawmill Crescent): 1,131 SF

CRU 4 (3415 Sawmill Crescent): 1,179 SF

CRU 5: LEASED

Total Contiguous Available: 3,538 SF

POSSESSION: IMMEDIATE

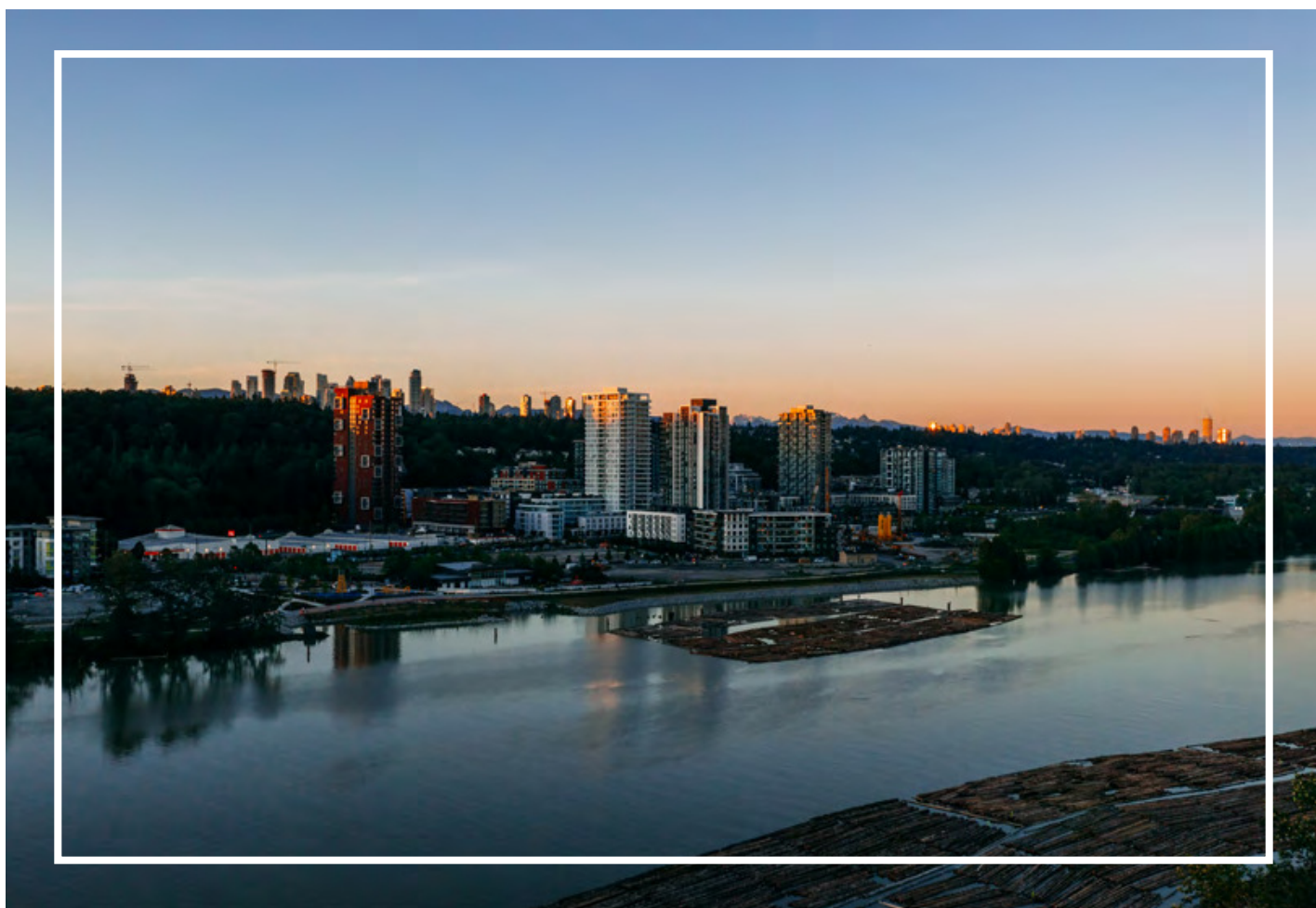
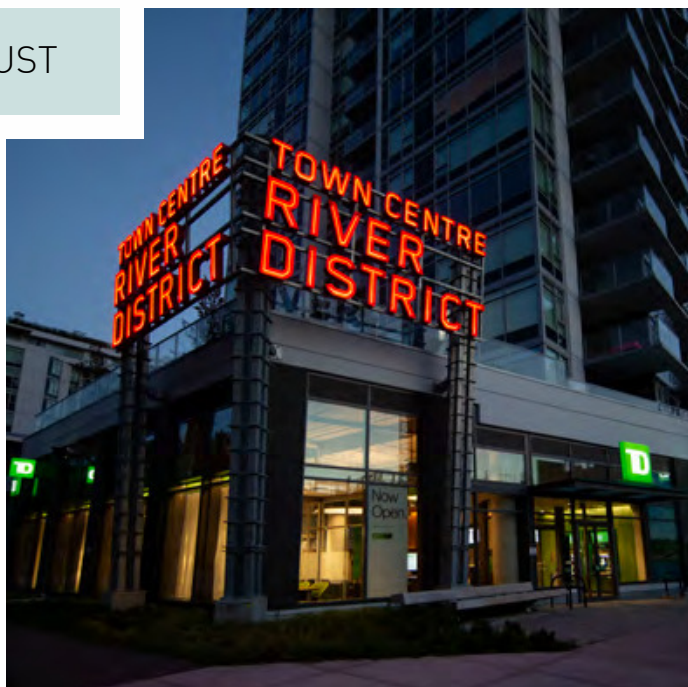
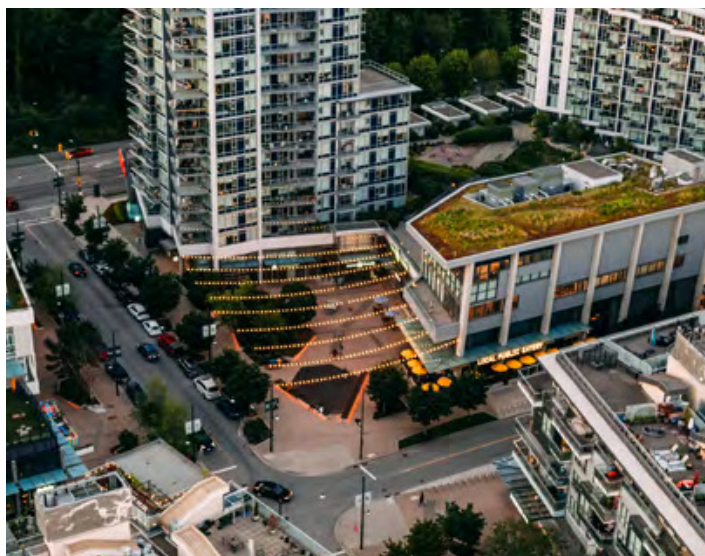


BUILDING UPDATE

CONSTRUCTION COMPLETE



HISTORY AND EXPERIENCE YOU CAN TRUST



THE DEVELOPER

Wesgroup Properties is a Vancouver-based, family-owned real estate company that specializes in the development of sustainable, mixed-use spaces. In business for more than 60 years, Wesgroup provides complete, end-to-end real estate services, acquiring, developing and managing commercial and residential properties.

Wesgroup is one of Western Canada's largest private real estate companies, with over 7,000 residential units completed and over 60 commercial buildings, totaling over 3.9 million square feet under management.



BREWERY DISTRICT, NEW WESTMINSTER





Developed by:

wesgroup

Marcus & Millichap

Marcus & Millichap

1100 - 1111 West Georgia Street
Vancouver, BC V6E 4M3
T 604 638 2121
F 604 638 2122

Retail Leasing:

Jack Allpress*
604 638 1975
JAllpress@MarcusMillichap.com

Amanda Broglio
604 398 3818
Amanda.Broglio@MarcusMillichap.com

The information contained in this Marketing Brochure is proprietary and strictly confidential. It is intended to be reviewed only by the party receiving it from Marcus & Millichap and should not be made available to any other person or entity without the written consent of Marcus & Millichap. This Marketing Brochure has been prepared to provide summary, unverified information to prospective purchasers, and to establish only a preliminary level of interest in the subject property. The information contained herein is not a substitute for a thorough due diligence investigation. Marcus & Millichap has not made any investigation, and makes no warranty or representation, with respect to the income or expenses for the subject property, the future projected financial performance of the property, the size and square footage of the property and improvements, the presence or absence of contaminating substances, PCB's or asbestos, the compliance with State and Federal regulations, the physical condition of the improvements thereon, or the financial condition or business prospects of any tenant, or any tenant's plans or intentions to continue its occupancy of the subject property. The information contained in this Marketing Brochure has been obtained from sources we believe to be reliable; however, Marcus & Millichap has not verified, and will not verify, any of the information contained herein, nor has Marcus & Millichap conducted any investigation regarding these matters and makes no warranty or representation whatsoever regarding the accuracy or completeness of the information provided. All potential buyers must take appropriate measures to verify all of the information set forth herein.

Marcus & Millichap is not affiliated with, sponsored by, or endorsed by any commercial tenant or lessee identified in this marketing package. The presence of any corporation's logo or name is not intended to indicate or imply affiliation with, or sponsorship or endorsement by, said corporation of Marcus & Millichap, its affiliates or subsidiaries, or any agent, product, service, or commercial listing of Marcus & Millichap, and is solely included for the purpose of providing tenant lessee information about this listing to prospective customers.

This information has been secured from sources we believe to be reliable, but we make no representations or warranties, express or implied, as to the accuracy of the information. References to square footage or age are approximate. Buyer must verify the information and bears all risk for any inaccuracies. Marcus & Millichap is a trademark of Marcus & Millichap Real Estate Investment Services, Inc. Used under license by Marcus & Millichap Real Estate Investment Services Canada Inc. © 2026 Marcus & Millichap. All rights reserved.

*Personal Real Estate Corporation